

About Dr. Webb

James Webb, M.D. is a board-certified by the American Board of Radiology. He is a fellowship-trained interventional musculoskeletal radiologist providing imaging interpretation and radiologic pain management services.

Dr. Webb trained at the University of Oklahoma with staff from Mayo Clinic and John Hopkins.

For more information, call (918) 260-WEBB or check out Dr. Webb's Blog at:

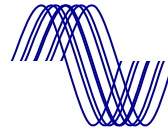
www.tentozero.com

For Appointments

Scheduling (918) 477-5060
Fax (918) 477-5062
E-mail admin@tulamsk.com

Oklahoma Surgical Hospital
2408 E 81st Street
Tulsa, OK 74137-4230

(918) 260-9322



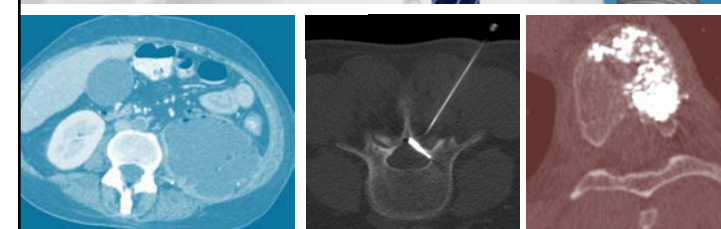
MUSCULOSKELETAL
IMAGING OF TULSA

Our Advantages

- ◆ The only Board-Certified, Fellowship-Trained Interventional Musculoskeletal Radiologist in the Tulsa metropolitan area.
- ◆ Unique skill set and focus on orthopedic, neurological and sport medicine practices.
- ◆ Subspecialty imaging and interventional expertise.
- ◆ Superb customer service orientation and rapid report turnaround.
- ◆ Image-guided pain interventions from epidural steroid injections to spine cord stimulation.
- ◆ Focus on vertebral compression fracture (VCF) fixation with advanced level training and specializing in complex cases.

James Webb, M.D.

Imaging and Interventional Services



POB 246, Tulsa, Oklahoma, 74133-0246

www.tulamsk.com



Advanced Imaging & Intervention

Training and
Experience
That You
Can
Trust



When
Your
Patients
Need It.

Vertebral Compression Fracture (VCF) Fixation

- Vertebroplasty
- AVA Flex Vertebral Body Augmentation
- Balloon Kyphoplasty
- Allograft bone implant (spinoplasty) great option for younger patients.
- Sacroplasty
- Osteoplasty

We Have The Most VCF Treatment Options Available of Any Provider in the Region

Dr. Webb has fixed hundreds of VCFs. We routinely and safely fix VCFs in patients who were told they could not have the procedure done. This includes revision cases & referrals from other doctors such as osteoporotic burst fractures and vertebra plana deformities.

While other providers perform the above procedures, we provide **comprehensive VCF care**, including consultation, evaluation, and prescribing all necessary diagnostic workup. We also provide VCF aftercare including therapy, bracing and osteoporosis treatment when appropriate. To learn more, visit www.fixyourvcf.com

Pain Management Services

- Epidural Steroid Injections*
- Paravertebral Blocks*
- Selective Nerve Root Blocks*
- Facet Blocks (Medial Branch & Intra-articular)*
- Discography*
- Intercostal Blocks
- Sacroiliac (SI) Joint Injections
- Intradiscal Electrothermal Therapy (IDET)
- Ganglion Blocks
 - Stellate Ganglion
 - Celiac Ganglion
 - Trigeminal Ganglion
 - Sympathetic Ganglion
 - Hypogastric Ganglion
- Pyrimiformis and other Trigger Point Injections
- Neurolysis & Ablation*
 - Radiofrequency (RF) Ablation and Rhizotomy
 - Cryoablation
 - Chemoablation (alcohol, phenol, etc)
 - RF Ablation of Metastasis
- Spinal Cord Stimulation

*Denotes procedures that Dr. Webb performs in the cervical, thoracic & lumbosacral spine.

Diagnostic Imaging Services

- Diagnostic Exams
- Plain Film
- Computed Tomography (CT)
- Magnetic Resonance Imaging (MRI)
- Ultrasound
- Nuclear Medicine
- Positron Emission Tomography (PET)
- General and Cardiac CT Angiography
- Bone Density Testing

Minimally Invasive Diagnostic Procedures

- Myelography
- Arthrography
- MR Arthrography
- CT Arthrography
- Fine Needle Biopsies

Interventional Radiology

- RF Ablation
- Bone Biopsy
- Vertebral Biopsy
- Abscess Drainages
- Most other interventional procedures—call for more specific information.

For appointments, call (918) 477-5060—or leave a message at (918) 260-WEBB (9322)